
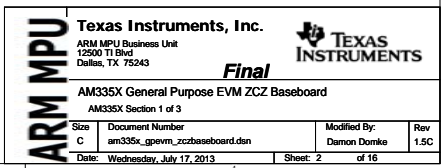


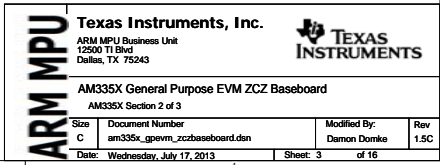
ARM MPU AM335X General Purpose EVM Base Board ZCZ Package

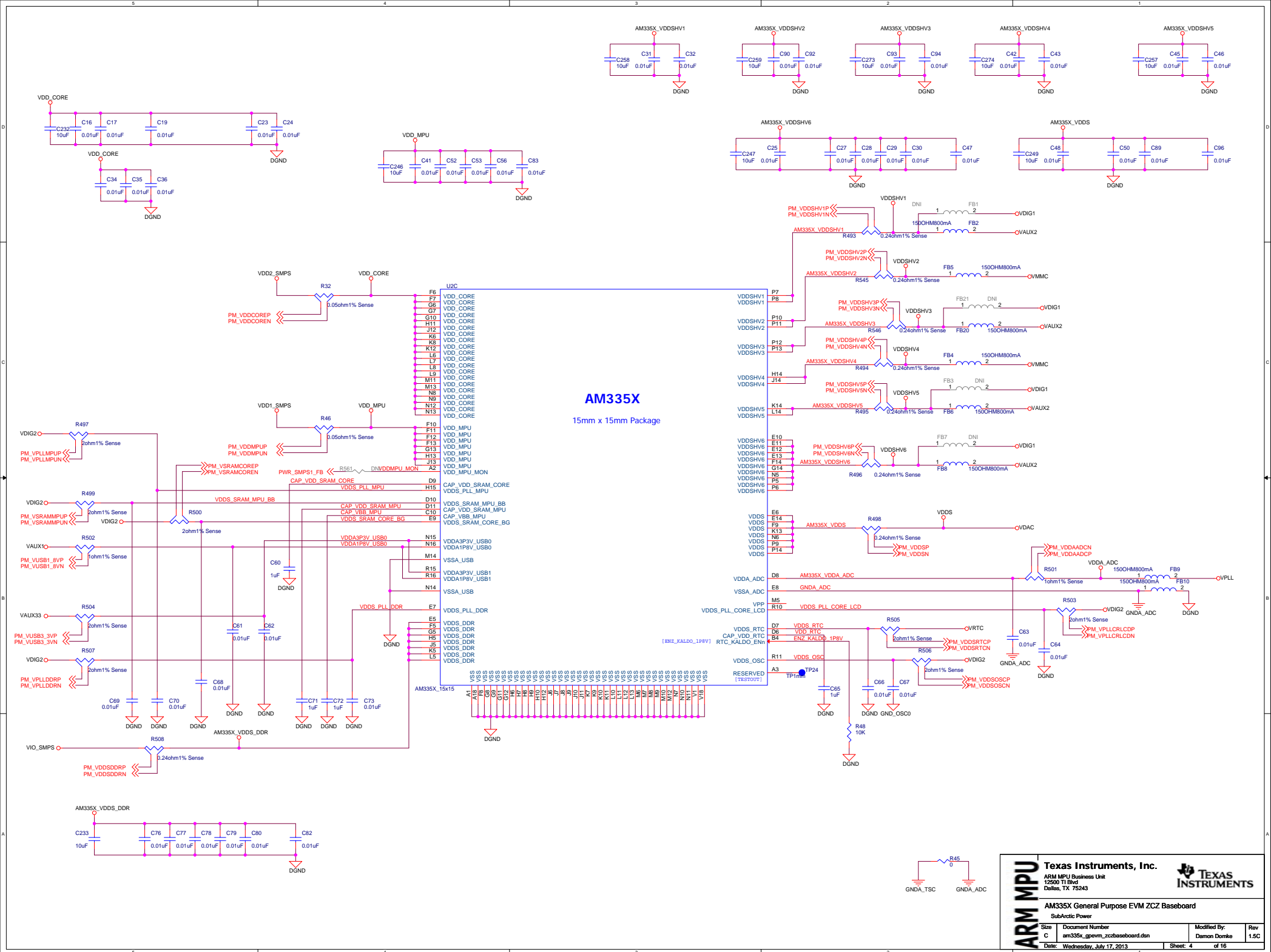
- See the Hardware User Guide for board details
- See the PCB Build Specification for PCB Details
- See the EVM Errata Document for Known Issues

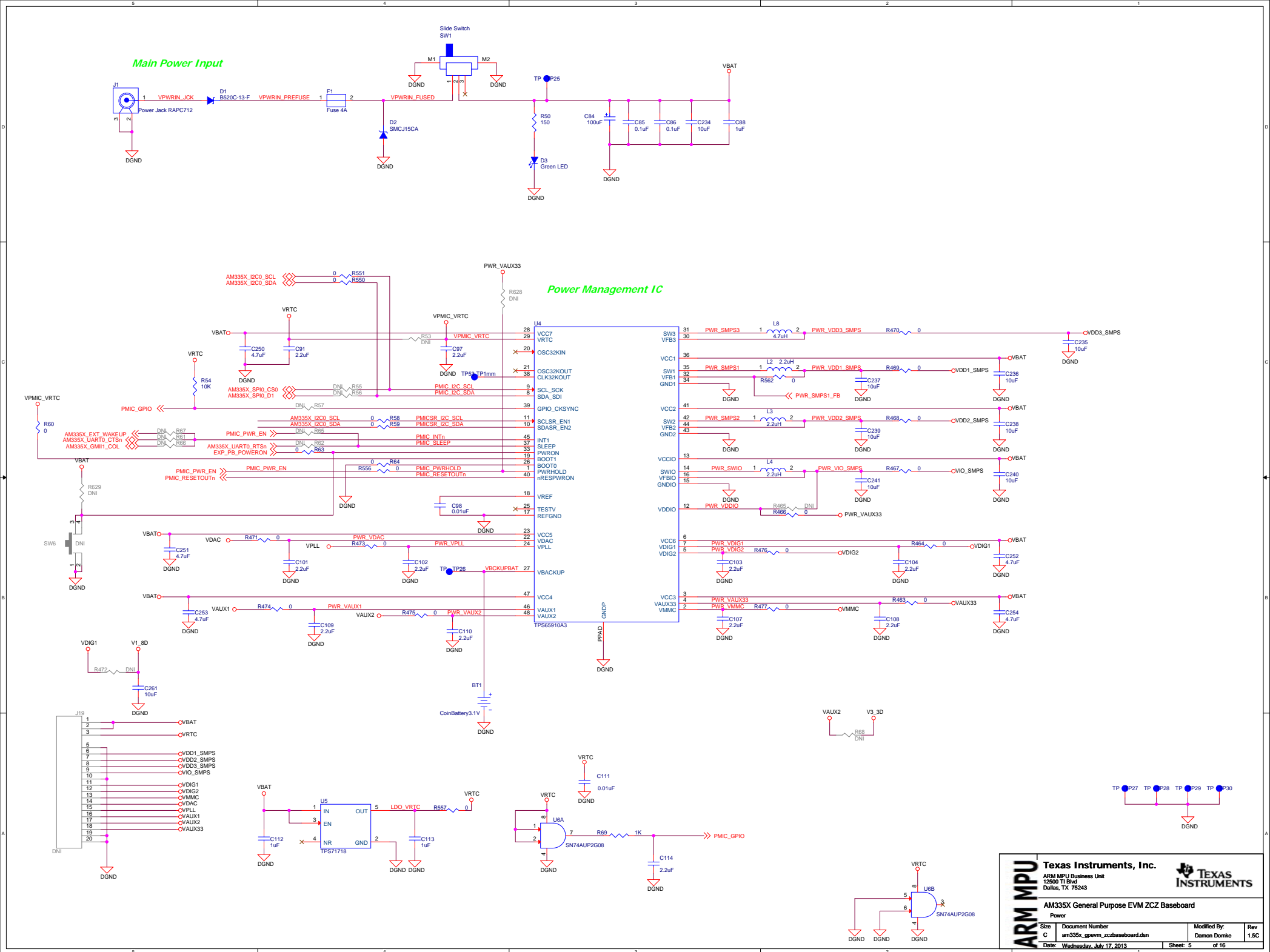
PCB1
AM335x 15x15 Base Board Bare PCB

ARM MPU	Texas Instruments, Inc.				
	ARM MPU Business Unit 12500 TI Blvd Dallas, TX 75243				
	Final				
	AM335X General Purpose EVM ZCZ Baseboard				
	Title Page				
Size	Document Number	Modified By:	Rev		
C	am335x_gpevm_zczbaseboard.dsn	Damon Domke	1.5C		
Date: Wednesday, July 17, 2013		Sheet: 1 of 16			

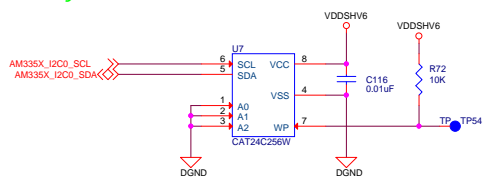




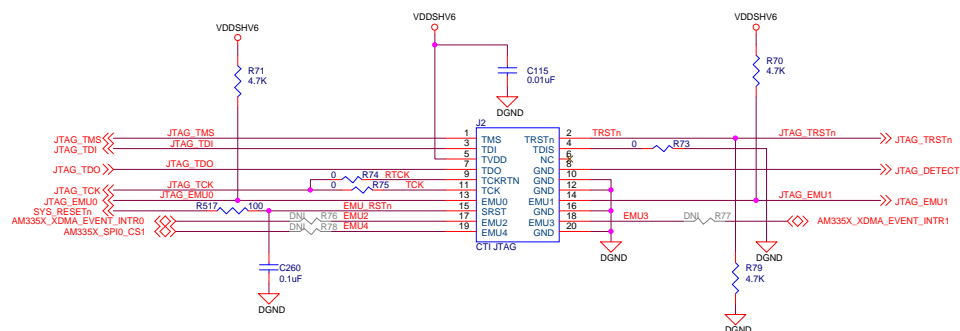




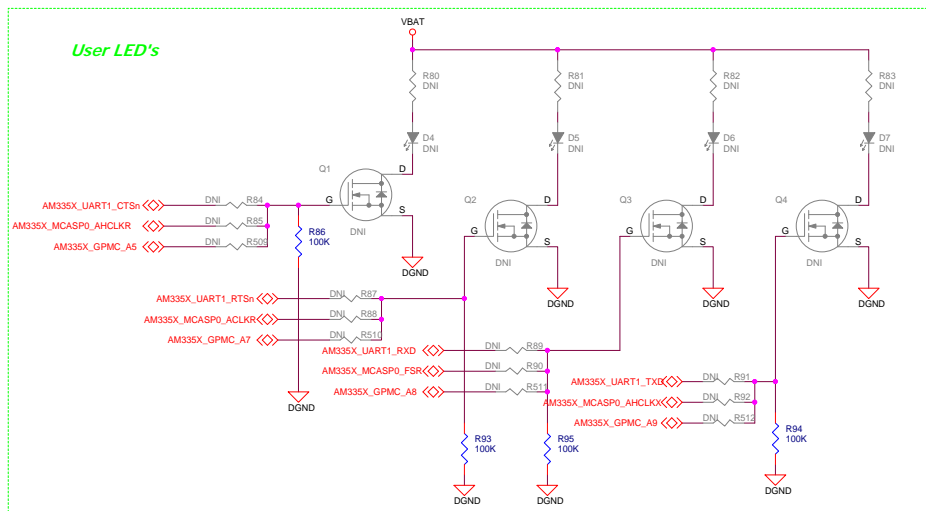
ID Memory



JTAG Connector



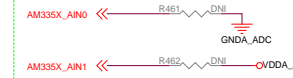
User LED's



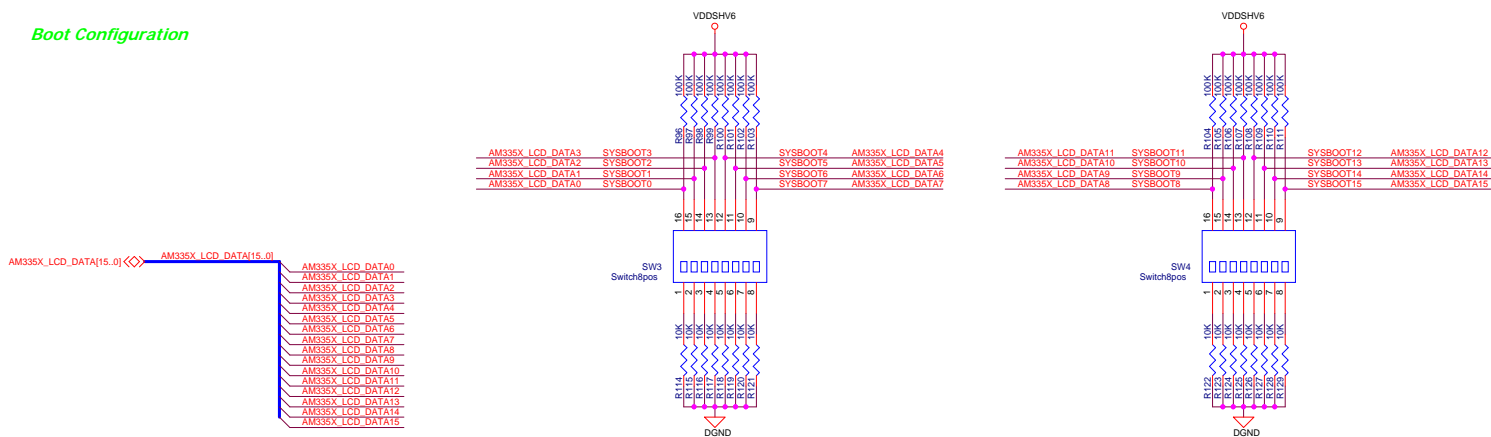
Clockout Measurement Testpoints



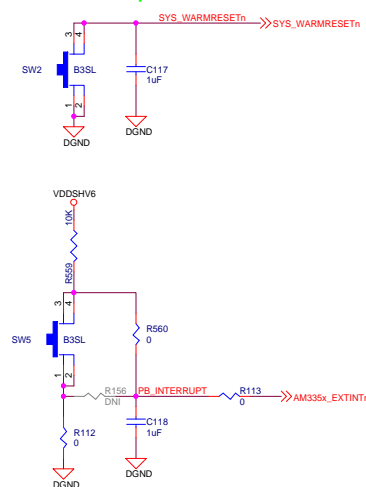
ADC Test

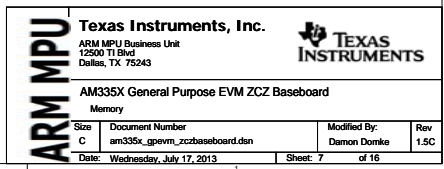


Boot Configuration

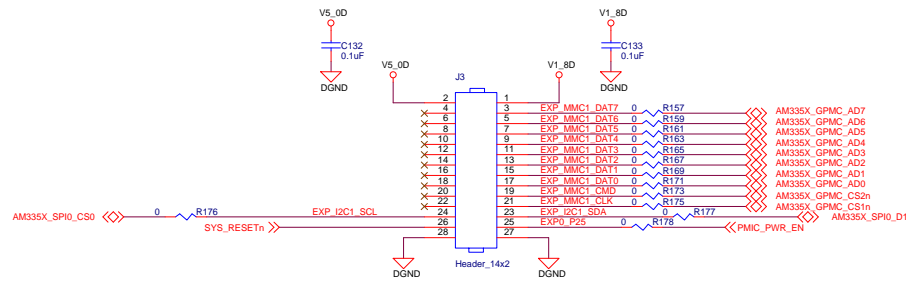


User Reset/Interrupt Switches

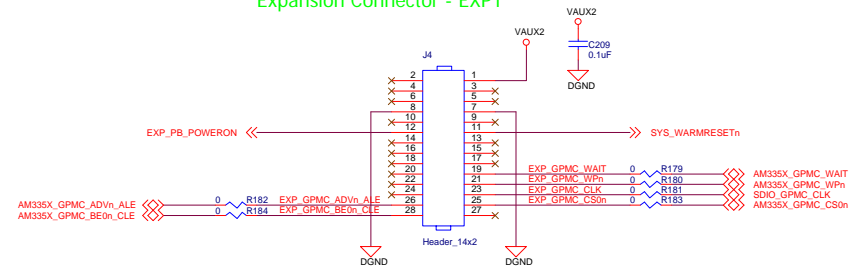




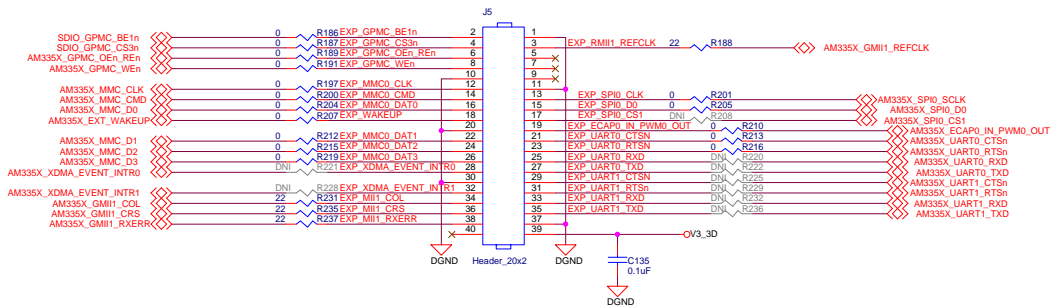
Expansion Connector - EXP0



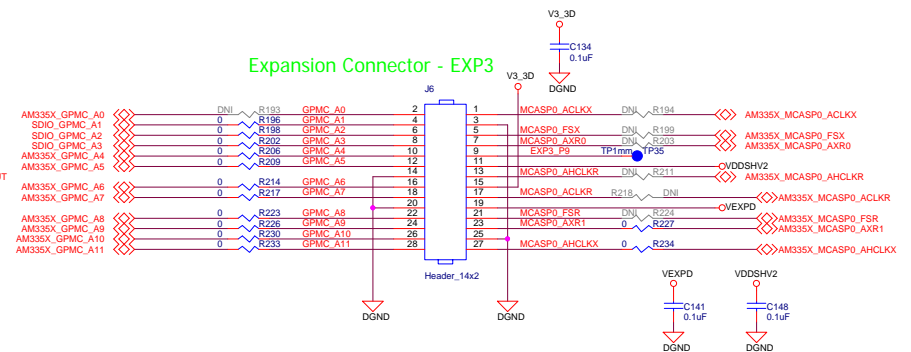
Expansion Connector - EXP1

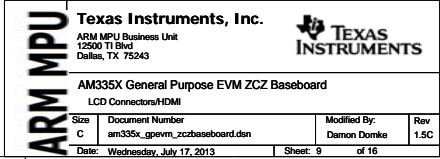


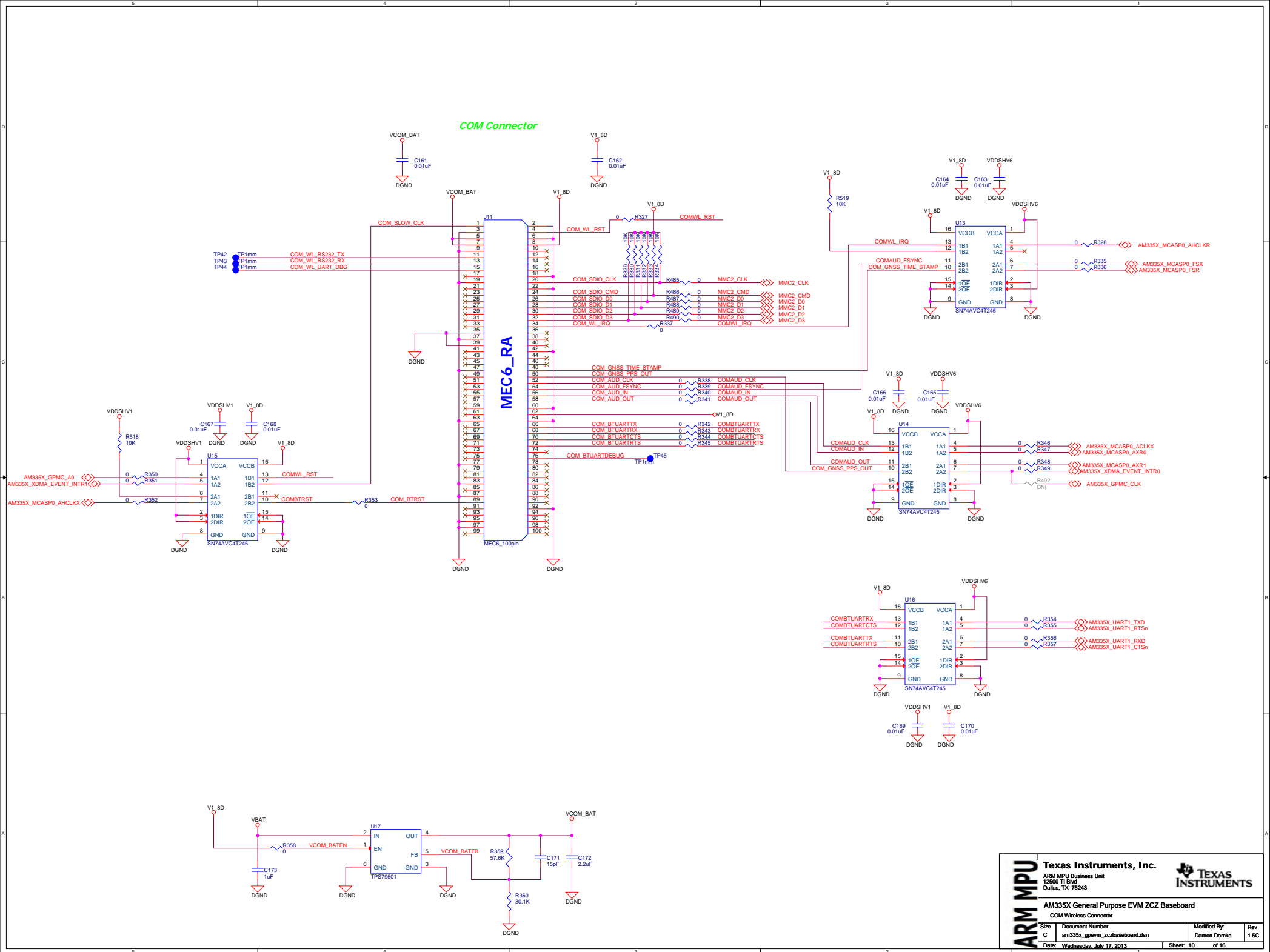
Expansion Connector - EXP2

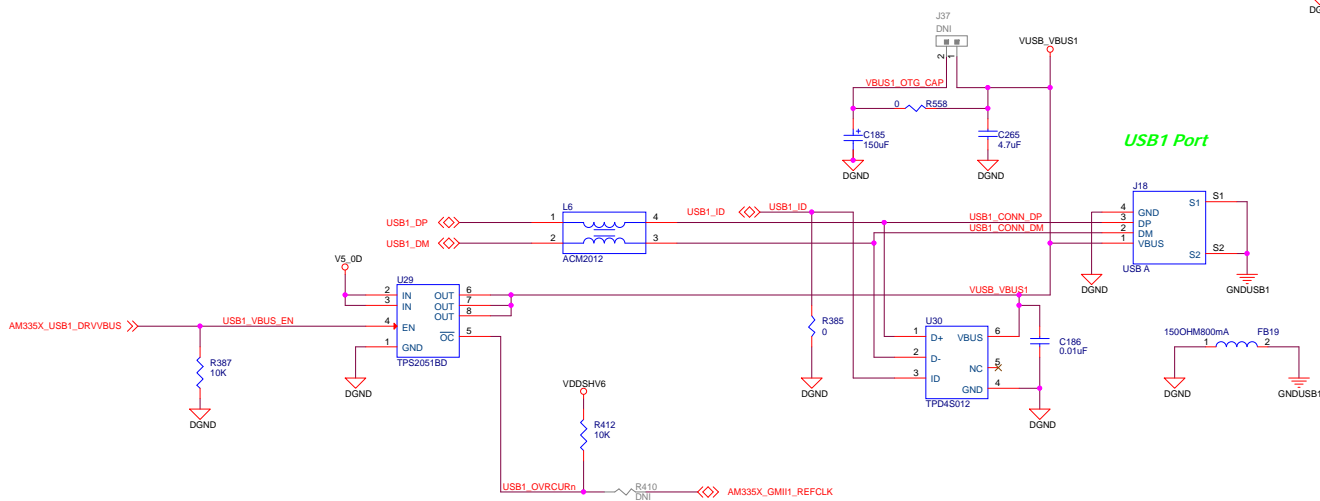
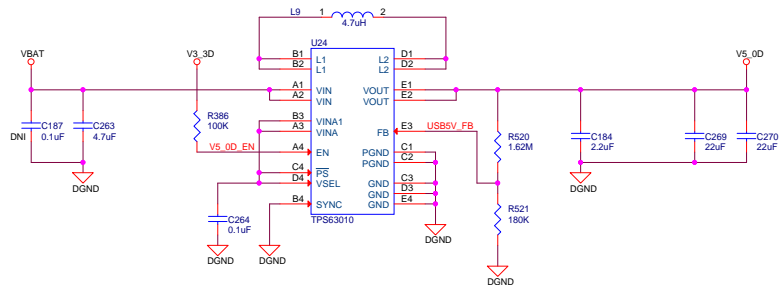
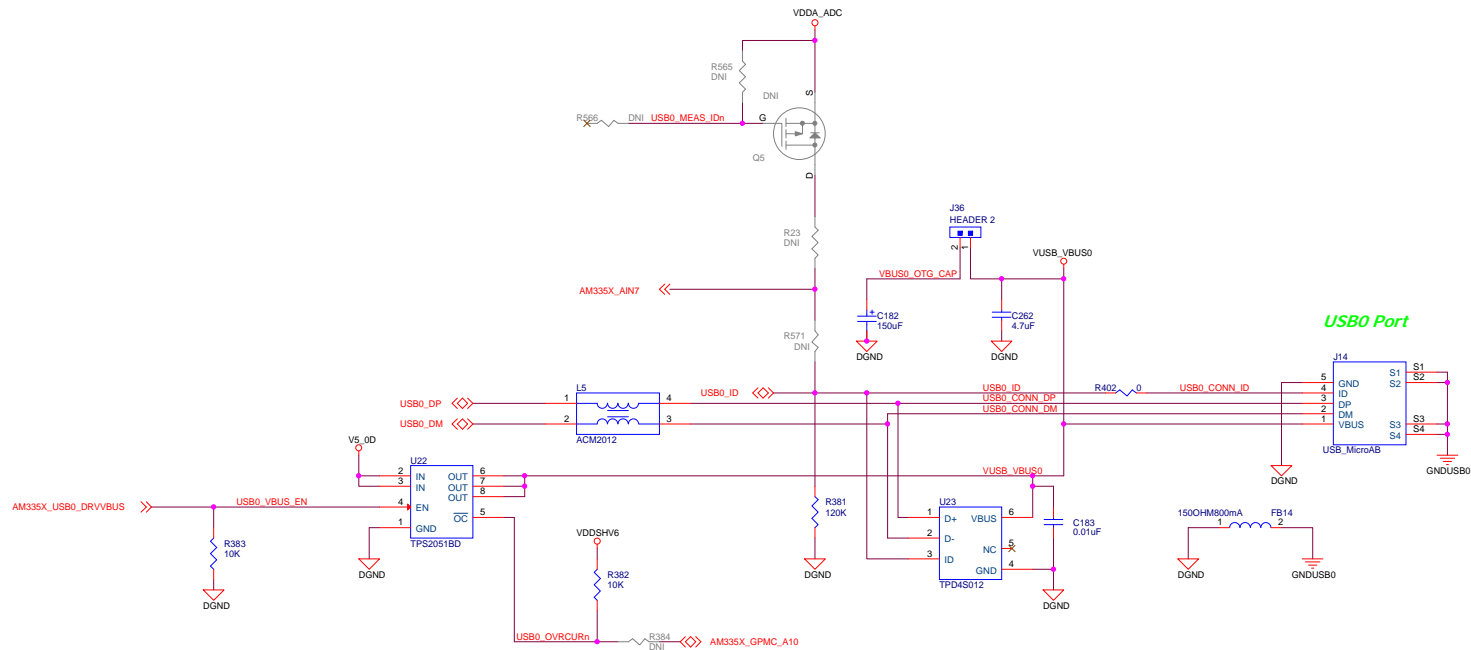


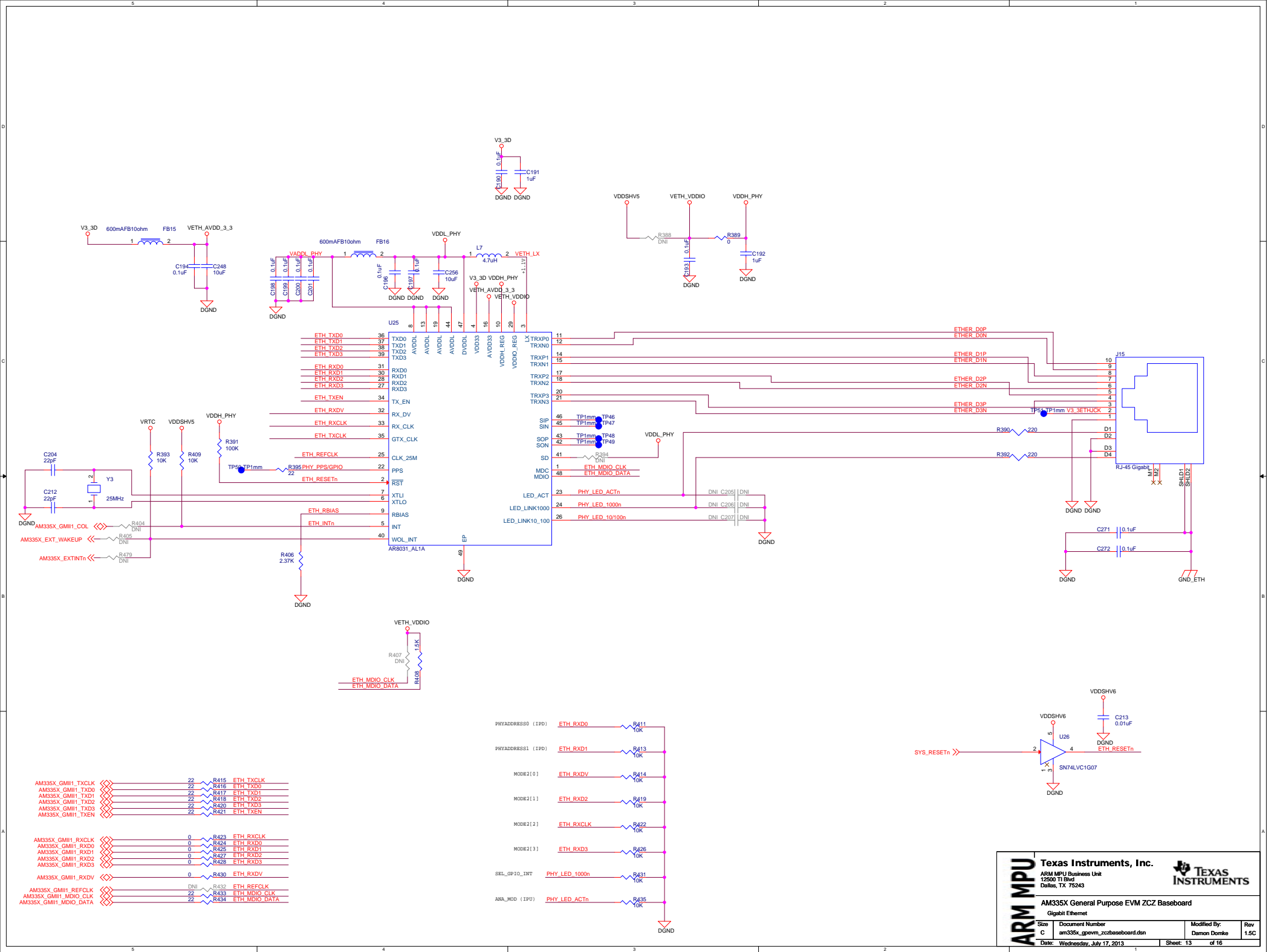
Expansion Connector - EXP3











MAVRK Connector

